



COMMERCIAL DOORS

REEB[®] IN-STOCK COMMERCIAL CATALOG



Introduction

Reeb® is the partner of choice for professionals seeking value and convenience on smaller-scale commercial projects.

Reeb stocks a wide variety of hollow metal doors, hollow and split metal frames, prefinished and unfinished commercial flush wood doors and commercial door hardware from the industry's top manufacturers.

If your project blends commercial and light commercial requirements, partnering with Reeb will maximize value and minimize wait times. All hollow metal frames and hardware are tagged and bundled together, per opening, and will arrive in one convenient package. We'll even install lite kits and apply fire labels to save you even more time.



Typical Reeb commercial projects include:

- Doctor's offices
- Banks
- Churches
- Small office buildings
- Small hotels
- Strip mall receiving doors
- And more...

How To Choose A Commercial Door

Step 1

Choose a frame

To choose the correct frame type, determine if your wall construction is drywall or masonry. If drywall, we stock two types of steel frames: hollow metal and commercial split steel. Masonry frames are hollow metal.

Hollow Metal

Pages 6-9

Reeb® stocks hollow metal frames for both drywall and masonry applications. Both are 16-gauge, rabbeted frames, fire-rated up to 90 minutes.

See **pages 6-9** for our in-stock sizes and to learn more.

Commercial Split-Steel (Interior Use Only)

Pages 10-11

Our commercial split steel frame offering is used for drywall applications only. It is 16-gauge and fire-rated up to 90 minutes.

See **pages 10-11** to learn more.

Step 2

Determine if a fire rating is required

Fire doors and their respective frames and hardware are rated by the amount of time (in minutes or hours) that a door can withstand exposure to fire in test conditions.

Fire Ratings

Page 12

Laws and regulations regarding fire ratings can vary between states, cities, townships and municipalities.

Always be sure to check with all regulating authorities to ensure the door units you order and install will comply with applicable laws.

See **page 12** to learn more.

→
(Continue to Step 3)



Step 3

Choose a door

After selecting your frame type, the next step is choosing a door. Reeb® stocks two types of commercial doors: hollow metal and commercial flush wood.

Other residential stile and rail and molded doors are available on request.

Hollow Metal

Pages 14-15

Our hollow metal doors are made from 18-gauge galvanized steel with a polystyrene insulated core and fire-rated up to 90 minutes

See **pages 14-15** to learn more.

Commercial Flush Wood

Pages 16-17

We offer two species, Birch and Oak, in commercial flush wood doors with a 20 minute (particle core) or 90 minute (mineral core) fire rating.

See **pages 16-17** to learn more.

Step 4

Choose your lites and louvers

Lites and Louvers

Page 18

Reeb stocks a variety of lites and louvers for the most common applications. All lites and louvers can be installed in hollow metal and wood doors, just select your preferred shape, size and position. Please keep in mind the size of lites and louvers may effect fire ratings.

See **page 18** to learn more.

Hardware and Accessories

Page 19

Reeb offers an extensive line-up of commercial hardware including exit devices, closers, locks and more.

See **page 19** to learn more.

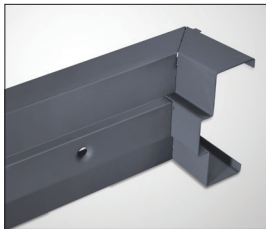
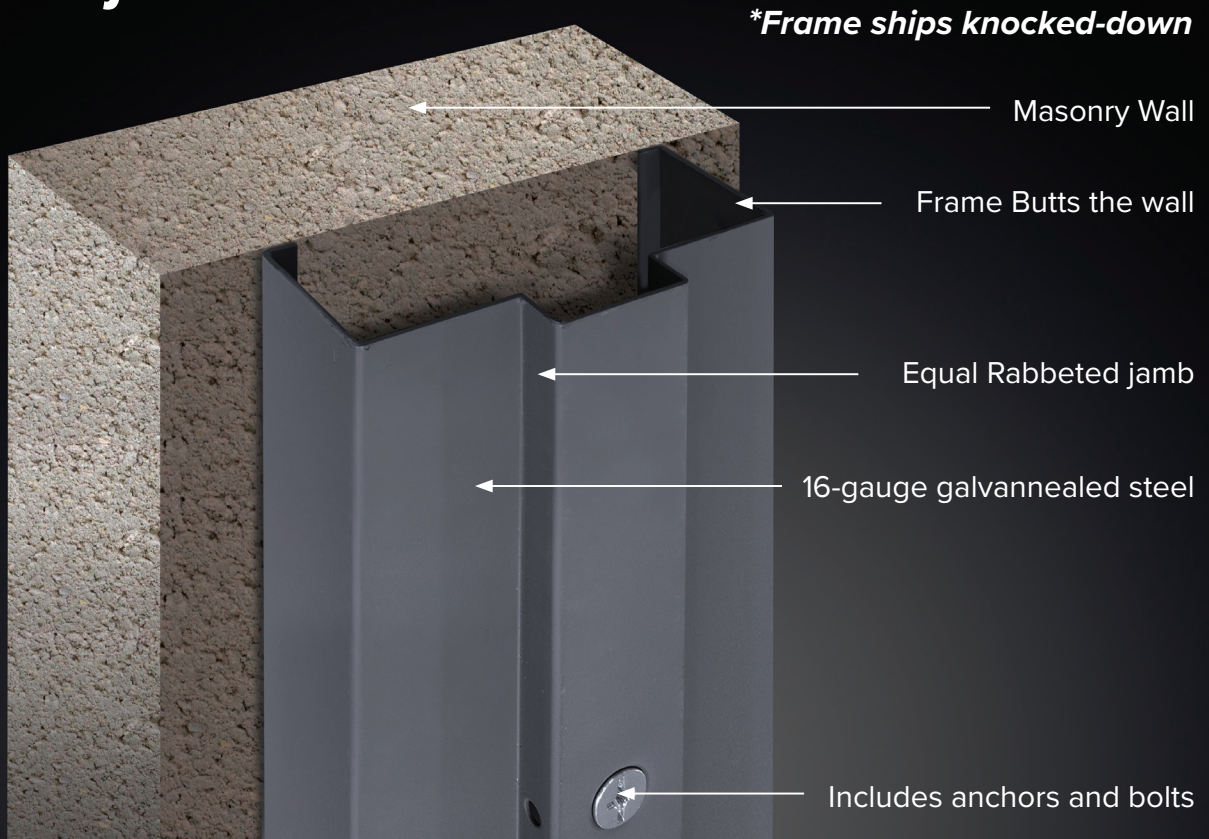
Step 5

Select your hardware and accessories

Hollow Metal Frames



Masonry Frame



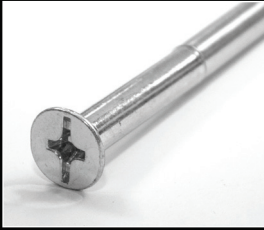
3 Piece Knock Down Frame



Door Silencers

Features

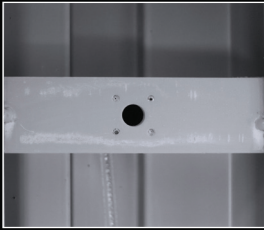
- 16-gauge galvanized
 - Primed and ready to paint
 - Reinforced for closer
 - SteelCraft® hinge and strike specifications
- See **page 23** for more information
- Hinge preps allow for the use of standard or heavy duty hinges
 - Fire-rated up to 90 minutes
 - Knock Down frames bundled together and ships with hardware and accessories
 - Punched and dimpled
 - Comes with anchors and bolts
 - Stocked in 5-3/4" jamb depths
 - Other sizes available special order
 - Frame ships knocked-down



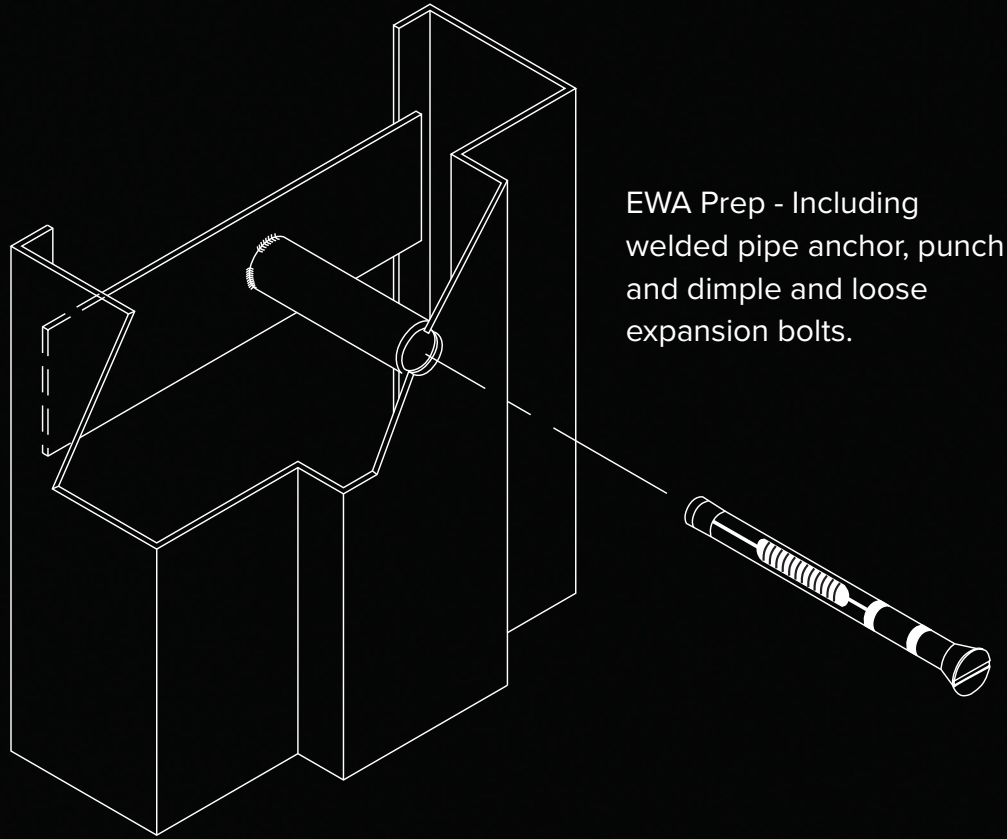
Dynabolt



Dimple and Counter Sink



Welded pipe anchor for Reinforcement



EWA Prep - Including welded pipe anchor, punch and dimple and loose expansion bolts.

Hardware sold separately. Please specify if needed.



ASA Strike Plate



Panic Reinforcement



Flushbolt Prep

Single Doors

In-Stock Sizes

	5-3/4" ASA	5-3/4" Panic
2/6 x 6/8	x	
2/8 x 6/8	x	
2/10 x 6/8	x	x
3/0 x 6/8	x	x
3/6 x 6/8	x	x
3/8 x 6/8		x
4/0 x 6/8	x	
2/6 x 7/0	x	
2/8 x 7/0	x	
2/10 X 7/0	x	x
3/0 x 7/0	x	x
3/6 x 7/0	x	x
3/8 x 7/0		x
4/0 x 7/0	x	

Double Doors

In-Stock Sizes

	5-3/4" F/B	5-3/4" Panic
4/0 x 6/8	x/o	x/x
5/0 x 6/8	x/o	x/x
6/0 x 6/8	x/o	x/x
4/0 x 7/0	x/o	x/x
5/0 x 7/0	x/o	x/x
6/0 x 7/0	x/o	x/x

ASA = ASA Prep
F/B = Flushbolt Prep
Panic = Panic Reinforcement

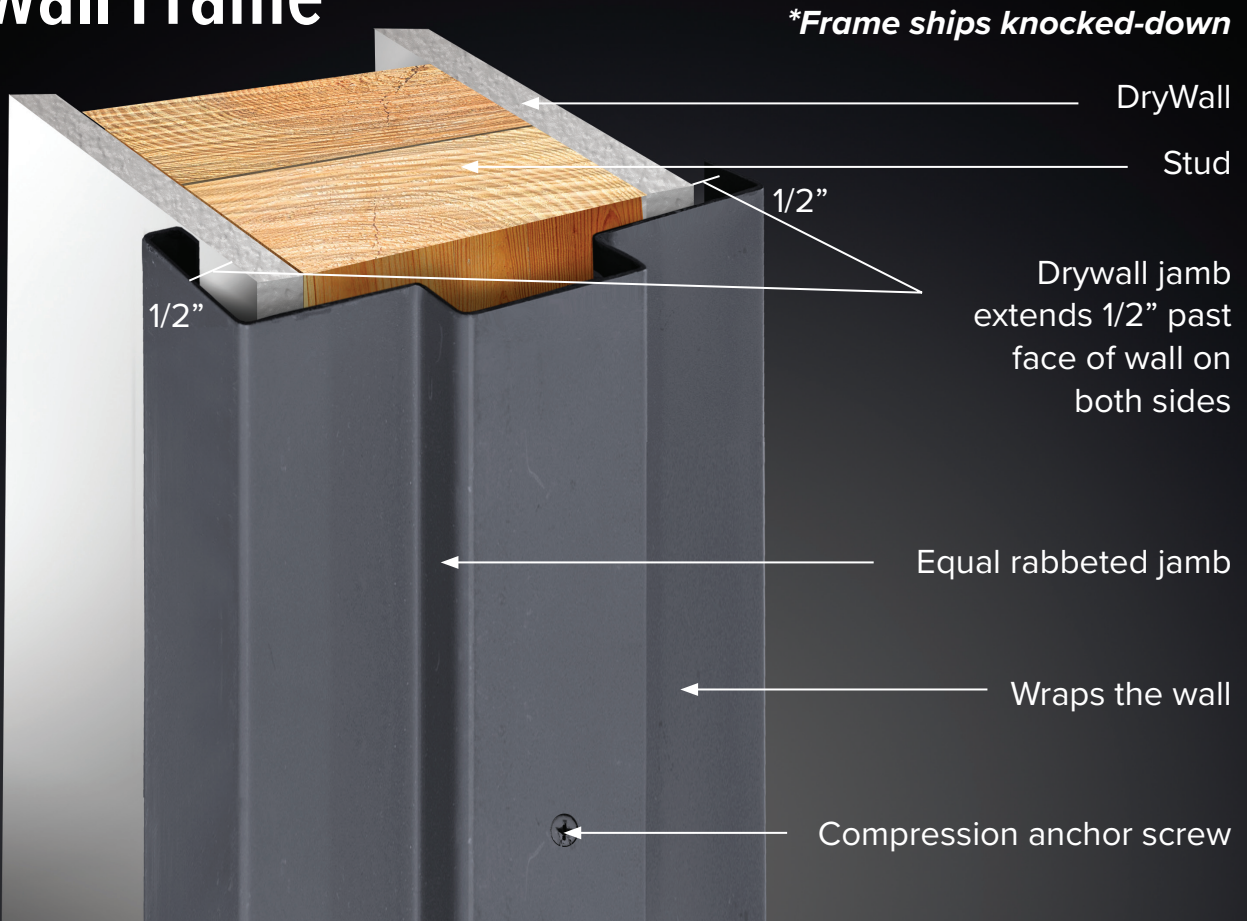
Note: All Hollow Metal frames are stocked with Closer Reinforcements

X = Stock Single Door

X/O = Stock Double Door with Flushbolt Prep

X/X = Stock Double Door for use with Vertical Rod Panic Hardware

Drywall Frame



**Frame ships knocked-down*

DryWall

Stud

1/2"

1/2"

Drywall jamb extends 1/2" past face of wall on both sides

Equal rabbeted jamb

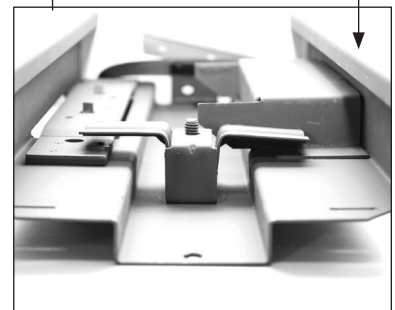
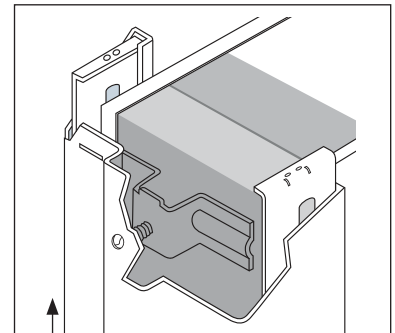
Wraps the wall

Compression anchor screw

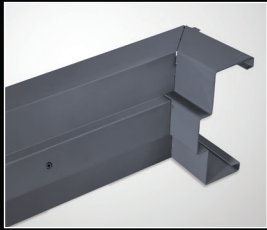
Features

- 16-gauge CRS (Cold Rolled Steel)
- Primed and ready to paint
- Reinforced for closer
- SteelCraft® hinge and strike specifications
See **page 23** for more information
- Hinge preps allow for the use of standard or heavy duty hinges
- Fire-rated up to 90 minutes
- Knock Down frames bundled together and ships with hardware and accessories
- Stocked in 5-5/8", 5-7/8" and 7-3/4" jamb depths.
- Other sizes available via special order
- Frame ships knocked-down

For Adjustment and Installation



Compression Anchor



3 Piece Knock Down Frame

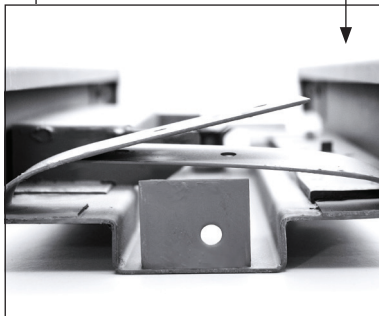
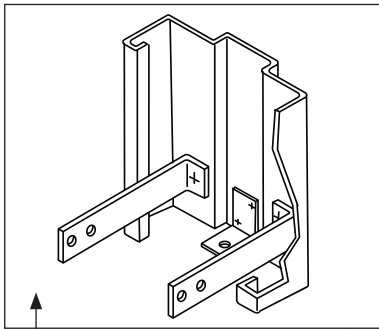


Compression Anchor Screw



Door Silencers

For Installation

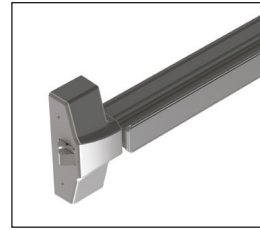


Sill Straps

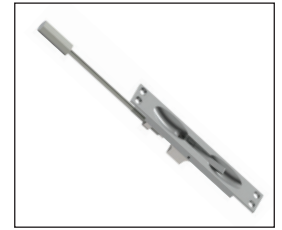
Hardware sold separately. Please specify if needed.



ASA Strike Plate



Panic Reinforcement



Flushbolt Prep

Single Doors

In-Stock Sizes

Frame Depth	5-5/8" ASA	5-5/8" Panic	5-7/8" ASA	5-7/8" Panic	7-3/4" ASA	7-3/4" Panic
Wall Thickness	4-5/8"	4-5/8"	4-7/8"	4-7/8"	6-3/4"	6-3/4"
2/0 x 6/8	x		x		x	
2/6 x 6/8	x		x		x	
2/8 x 6/8	x		x		x	
2/10 x 6/8	x	x	x	x	x	x
3/0 x 6/8	x	x	x	x	x	x
3/6 x 6/8	x	x	x	x	x	x
3/8 x 6/8		x		x		x
4/0 x 6/8	x		x		x	
2/0 x 7/0	x		x		x	
2/6 x 7/0	x		x		x	
2/8 x 7/0	x		x		x	
2/10 X 7/0	x	x	x	x	x	x
3/0 x 7/0	x	x	x	x	x	x
3/6 x 7/0	x	x	x	x	x	x
3/8 x 7/0		x		x		x
4/0 x 7/0	x		x		x	

Double Doors

In-Stock Sizes

Frame Depth	5-5/8" F/B	5-5/8" Panic	5-7/8" F/B	5-7/8" Panic	7-3/4" F/B	7-3/4" Panic
Wall Thickness	4-5/8"	4-5/8"	4-7/8"	4-7/8"	6-3/4"	6-3/4"
4/0 x 6/8	x/o	x/x	x/o	x/x	x/o	x/x
5/0 x 6/8	x/o	x/x	x/o	x/x	x/o	x/x
6/0 x 6/8	x/o	x/x	x/o	x/x	x/o	x/x
4/0 x 7/0	x/o	x/x	x/o	x/x	x/o	x/x
5/0 x 7/0	x/o	x/x	x/o	x/x	x/o	x/x
6/0 x 7/0	x/o	x/x	x/o	x/x	x/o	x/x

ASA = ASA Prep
 F/B = Flushbolt Prep
 Panic = Panic Reinforcement

X = Stock Single Door

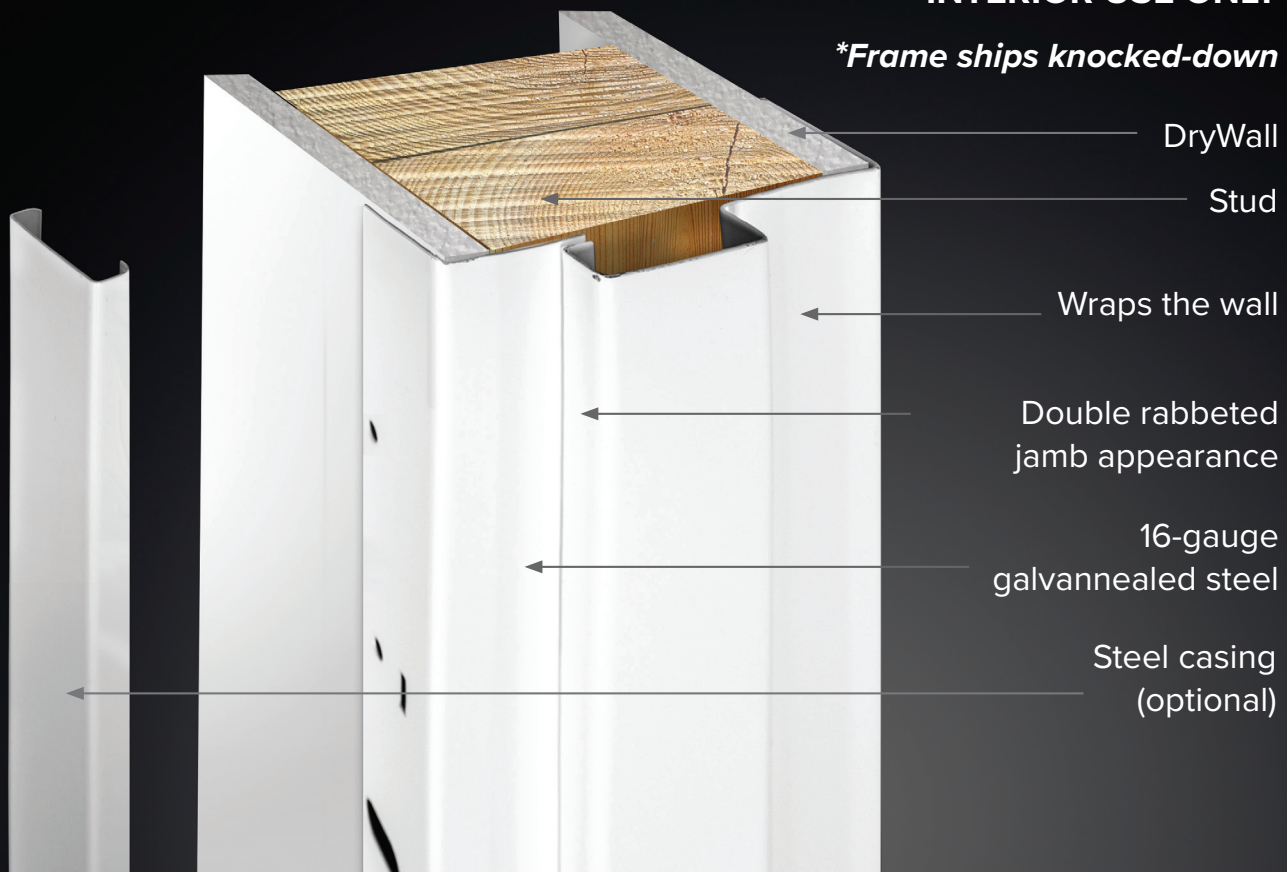
X/O = Stock Double Door with Flushbolt Prep

X/X = Stock Double Door for use with Vertical Rod Panic Hardware

Commercial Split Steel Frames

INTERIOR USE ONLY

**Frame ships knocked-down*



Features

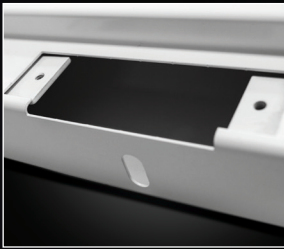
- For use with hollow metal and commercial wood doors
- 16-gauge powder-coated galvanized steel
- Extremely durable and easy to paint
- 4-1/2" Hinge preps / ASA ANSI Strike Prep (No Deadbolt prep)
- SteelCraft® hinge and strike specifications
See **page 23** for more information
- Fire-rated up to 90 minutes
- No weatherstripping kerf
- No sill
- Frame ships knocked-down
- Steel Casing available (please specify if needed)
- Stocked Frame sizes: 2/6, 2/8, 3/0 Width and 6/8, 7/0 Height
- 18-gauge adjustable closure packs for the following wall thicknesses: 4" to 5-1/4", 5" to 6-1/4", 6" to 7-1/4", 8" to 9-1/4"
- Split Frames are a Flange Type frame that is installed by screwing through the flange into the sheet rock/stud

Commercial split-steel frames are also an excellent choice for security, fire safety, sound reduction and sanitation in high-traffic commercial buildings. Unlike hollow metal frames, commercial split-steel frame's multipart construction allows for adjustments when the exact wall thickness cannot be determined.

Reeb® stocks commercial split-steel frames for interior use only.



Closure Pack



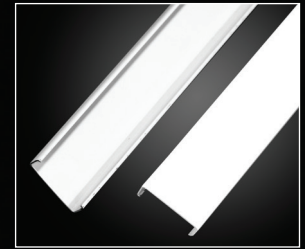
4-7/8" ASA Prep



ASA Plate Adapter



Hinge Reinforcement



Casing (Optional)

Single Doors

In-Stock Sizes

Closure Packs	4" to 5-1/4"	5" to 6-1/4"	6" to 7-1/4"	8" to 9-1/4"
2/6 x 6/8	x	x	x	x
2/8 x 6/8	x	x	x	x
3/0 x 6/8	x	x	x	x
2/6 x 7/0	x	x	x	x
2/8 x 7/0	x	x	x	x
3/0 x 7/0	x	x	x	x

Note: Double Doors are N/A

X = Stock Single Door

Fire Ratings

Fire doors and their respective frames and hardware are rated by the amount of time, in minutes or hours, that a door can withstand fire in test conditions.

Laws and regulations can vary widely between states, cities, townships and municipalities. Always be sure to check with all regulating authorities to ensure the door units you order and install comply with all applicable laws.

Positive Pressure (UL10c) Fire Doors

The WDMA (Window and Door Manufacturers Association) separates positive pressure fire-rated doors into two categories. Both Category “A” and Category “B” doors make use of intumescent seals. These materials expand when heated, creating a tight seal and filling in gaps around the door. In test conditions, this helps prevent the spread of fire and super-heated gasses from escaping.

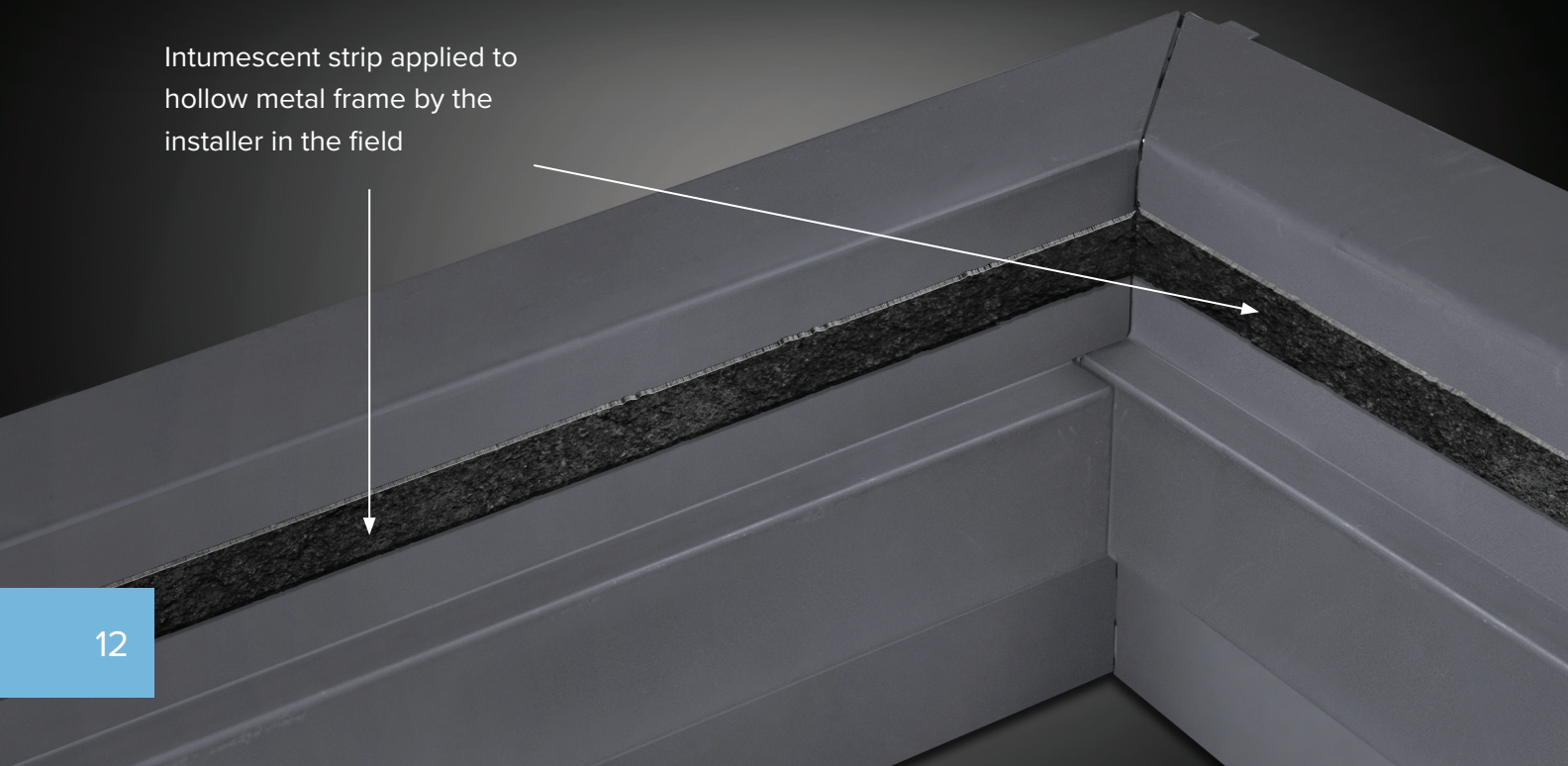
Category “A”

Category “A” doors have intumescent seals and/or gasketing built into the structure of the door. They typically do not require additional sealing between the door and frame but may require a smoke seal or additional gaskets.

Category “B”

Category “B” doors are neutral pressure doors that require an additional intumescent strip and/or gasket kit applied to the frame to provide an intumescent seal. These kits are available through Reeb® and need to be applied according to the enclosed instructions by the installer in the field. Because fire regulations can vary widely, some areas will also require an intumescent strip as part of the door’s edge. Please be sure to specify all rating requirements to your Reeb sales representative.

Intumescent strip applied to hollow metal frame by the installer in the field





Smoke Seal Labels

Some doors, regardless of pressure requirements, may also require a smoke seal (“S”) label. This label indicates that the installer is required to apply a category “H” gasket to the frame. Please specify, if required.

Self-Closing

Fire doors must self-close and latch unaided using a door closer or the correct self-closing hinges. See **page 20** for more information.

Self-Latching

Fire doors must have a labeled automatic latching device to engage the strike. Lockset hardware with a latch bolt or a panic device with a latch bolt are required.

Deadbolts can’t be used in place of a latch bolt, but can be used in addition to a latch bolt, except on egress doors. See **pages 19-20** for more information.

Door Unit vs Wall Fire Ratings

Commercial codes typically require that door units be rated for three-fourths of the rating of the surrounding wall. For example: a three-hour door is used in four-hour rated wall; a 90 minute door is used in a two-hour rated wall; and a 45 minute door is used in a one-hour rated wall.

Adding a Lite to a Fire-Rated Door

Adding a lite over 100 square inches to a fire-rated door will decrease its rating by 50%. For example: a 24”x30” or commercial half-lite installed in a 90 minute fire-rated door will result in a net fire-rating of 45 minutes.

Hollow Metal Doors

Our hollow metal doors are constructed from 18-gauge galvanized steel with a polystyrene core and fire-rated up to 90 minutes. We stock 3 different designs, a 6 panel embossed, a 2 panel embossed, and a flush door with a 161 prep or rim reinforced option.

Features

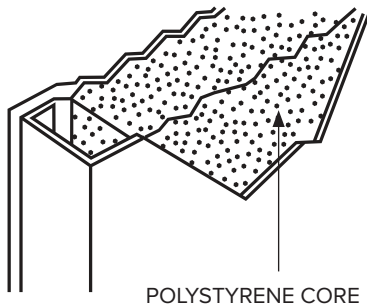
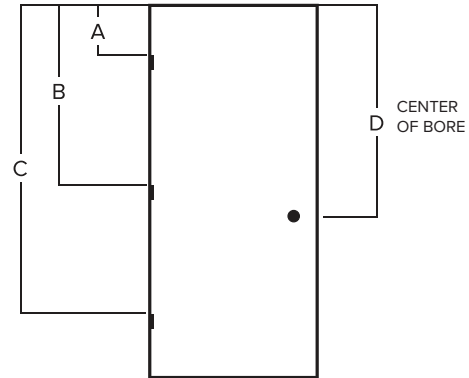
- 18-gauge galvanized steel
- Extremely durable and easy to paint
- Polystyrene insulated core
- Reinforced for closer
- Manufactured to SteelCraft® specifications
- Fire-rated up to 90 minutes (single doors and double doors)

Standard SteelCraft® Specifications

Stock Door Hinge/Bore Locations

HEIGHT	A	B	C	D
6/8	7-3/8"	37-5/16"	67-1/4"	39-9/16"
7/0	7-3/8"	39-5/16"	71-1/4"	43-9/16"

Doors are undersized 1/4" width and 3/4" height



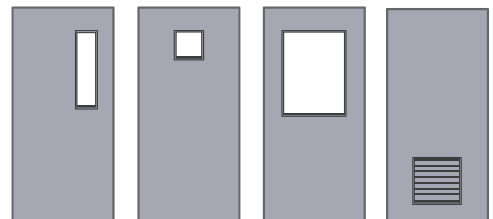
Polystyrene Insulated Core

Polystyrene core increases the insulation performance of the door and resistance to impact.

"U" factor is 0.37 / "R" value is 2.70

Lites and louvers are available with flush hollow metal doors.

See **page 18** for more information.



Hollow Metal Doors

In-Stock Sizes



	HM Flush		HM 2 Panel		HM 6 Panel	
	161 Bore	Rim Reinforced	161 Bore	Rim Reinforced	161 Bore	Rim Reinforced
2/0 x 6/8	x	x				
2/6 x 6/8	x	x				
2/8 x 6/8	x					
2/10 x 6/8	x	x				
3/0 x 6/8	x	x	x	x	x	x
3/6 x 6/8	x	x				
3/8 x 6/8		x				
4/0 x 6/8	x					
5/0 x 6/8	x/o					
6/0 x 6/8	x/o	x/x	x/o	x/x	x/o	x/x
2/0 x 7/0	x	x				
2/6 x 7/0	x	x				
2/8 x 7/0	x					
2/10 x 7/0	x	x				
3/0 x 7/0	x	x	x	x	x	x
3/6 x 7/0	x	x				
3/8 x 7/0		x				
4/0 x 7/0	x					
5/0 x 7/0	x/o					
6/0 x 7/0	x/o	xx	x/o	x/x	x/o	x/x

X = Stock Single Door

X/O = Stock Double Door with Flushbolt Prep

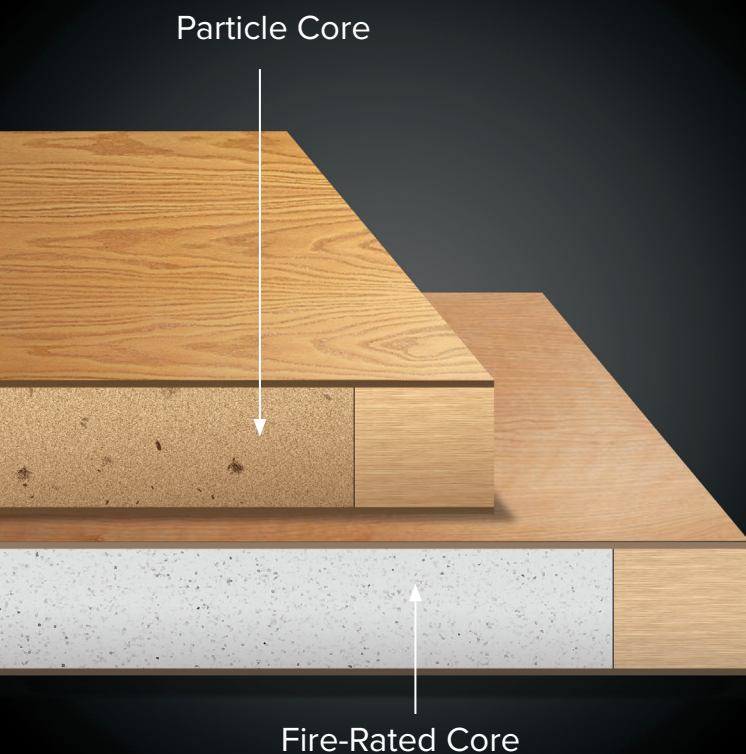
X/X = Stock Double Door for use with Vertical Rod Panic Hardware

Commercial Flush Wood Doors

We stock commercial flush wood door products in two species - **Birch** and **Oak**. Each door is 1-3/4" thick with a choice of 20 minute (particle core) or 90 minute (fire-rated core).

Features

- 1-3/4" thick
- 5 ply Birch and Oak
- Architectural grade
- Prefit 3/16" in width and 3/4" in height
- 20 minute particle core or 90 minute fire-rated core
- Beveled 1 side
- Shop can prep for hinges, bore, flushbolts and ASA strikes
- Shop machined to standard SteelCraft® specifications
- Custom hinge and bore locations available upon request and specification
- Prefinished clear on 3/0 x 6/8 and 3/0 x 7/0 - Birch and Oak
- Extremely durable and easy to paint/stain
- Fire-rated up to 90 minutes (single doors and double doors)
- To achieve a 90 minute fire rating on a double door, Metal Edges are used to wrap the edges between the doors



Particle Core

- 5 Ply Particle Core Birch / Oak Doors
- ASTM D5456-09 / ANSI A208.1
- Stiles = 7/16" Wood laminated to 1" SCL
- Rails = 1-7/16" SCL
- Core = Particleboard with density of 28-32 PCF LD1 Bonded
- Adhesive = Type I (waterproof) PVA (no urea formaldehyde) VOC<0.683 g/L

Fire-Rated Core

- 5 Ply Fire-Rated Core Birch / Oak Doors
- Stiles = 7/16" Wood laminated to 1" (FPCM) (Fire Proof Composite Material)
- Rails = 1-1/2" (FPCM)
- Core = Non-Combustible Material
- Adhesive = Type I (waterproof) PVA (no urea formaldehyde) VOC<0.683 g/L

Commercial Flush Wood Doors

In-Stock Sizes

Birch
Natural Rotary
Stain Grade



Birch
Natural Rotary
Prefinished Clear



Red Oak
Plain-Sliced
Stain Grade



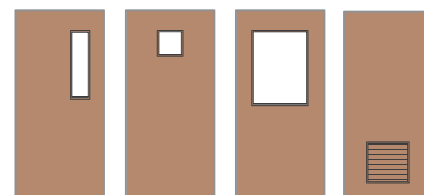
Red Oak
Plain-Sliced
Prefinished Clear



	20 MIN.	90 MIN.	20 MIN.	90 MIN.	20 MIN.	90 MIN.	20 MIN.	90 MIN.
2/0 x 6/8	x							
2/6 x 6/8	x	x	x					
2/8 x 6/8	x	x						
3/0 x 6/8	x	x	x	x	x	x	x	x
3/6 x 6/8	x	x						
5/0 x 6/8	x/o	x/o						
6/0 x 6/8	x/o & x/x	x/o & x/x	x/o & x/x	x/o & x/x	x/o & x/x	x/o & x/x	x/o & x/x	x/o & x/x
2/0 x 7/0	x							
2/6 x 7/0	x	x	x					
2/8 x 7/0	x	x						
3/0 x 7/0	x	x	x	x	x	x	x	x
3/6 x 7/0	x	x						
4/0 x 7/0	x							
5/0 x 7/0	x/o	x/o						
6/0 x 7/0	x/o & x/x	x/o & x/x	x/o & x/x	x/o & x/x	x/o & x/x	x/o & x/x	x/o & x/x	x/o & x/x

Lites and louvers are available with commercial flush wood doors.

See **page 18** for more information.



X = Stock Single Door

X/O = Stock Double Door with Flushbolt Prep

X/X = Stock Double Door for use with Vertical Rod Panic Hardware

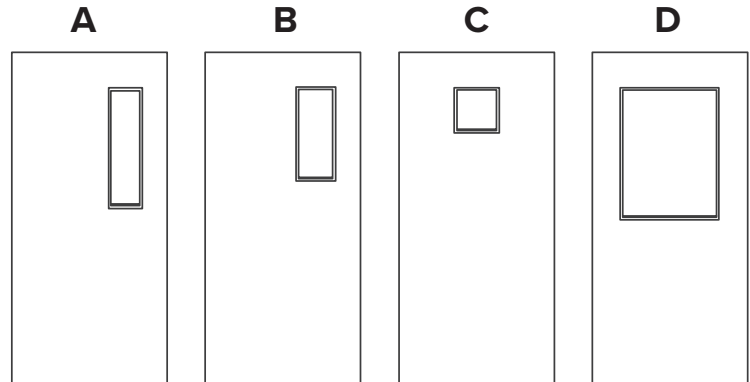
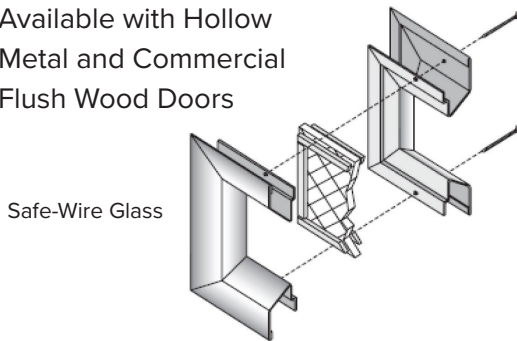
Lites & Louvers

Reeb® carries a selection of lites and louvers for the most common applications. Our fire-rated lites now feature a clear glass as well as a safe wire glass. For other sizes and non-standard locations, please specify when placing an order.

Lites

In-Stock Sizes

- Available with Hollow Metal and Commercial Flush Wood Doors

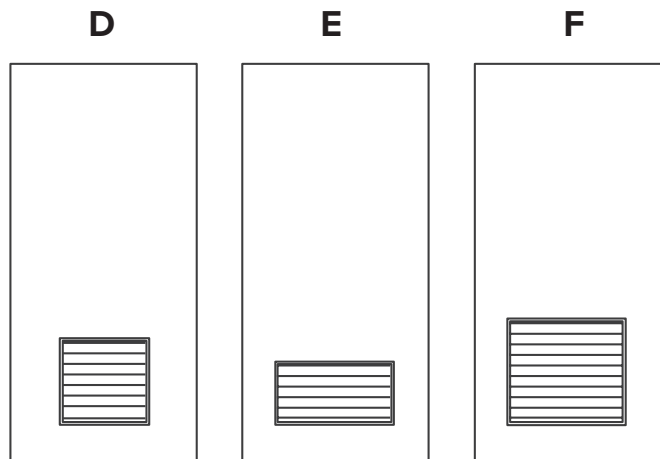
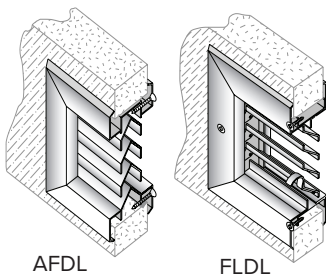


Order Size	Exposed Glass Size	Safe-Wire Glass		Pyran F Glass		Clear Tempered Glass	
		90 MIN. DOOR	20 MIN. DOOR	90 MIN. DOOR	20 MIN. DOOR		
						NON-RATED	
A	6" x 27"	4" X 25"	Up to 90 Mins.	Up to 20 mins.	Up to 90 Mins.	Up to 20 mins.	Non-Rated
B	7" x 22"	5" X 20"	Up to 90 Mins.	Up to 20 mins.	Up to 90 Mins.	Up to 20 mins.	Non-Rated
C	12" x 12"	10" X 10"	Up to 90 Mins.	Up to 20 mins.	Up to 90 Mins.	Up to 20 mins.	Non-Rated
D	24" X 30"	22" X 28"	Up to 45 Mins.	Up to 20 mins.	Special Order	Special Order	Non-Rated

Louvers

In-Stock Sizes

- No louvers available in 20 minute fire-rated doors
- Available for Hollow Metal and Commercial Flush Wood Doors



Order Size	AFDL Non-Rated	FLDL Rated Up To 90 mins
D	18" x 18"	x
E	24" x 12"	x
F	24" x 24"	x

AFDL = Fixed Blade Door Louver
 FLDL = Fusible Link Door Louver
 X = STOCK ITEMS

Hardware & Accessories

Heavy Duty Exit Devices

Heavy duty hardware is recommended for high traffic areas

Heavy Duty Exit Devices	US10B	US26D
Hager® 4500 Series Rim Exit 36"	•	•
Hager 4500 Series Rim Exit 48"		
Hager 4500 Series Fire-Rated Rim Exit 36"	•	•
Hager 4500 Series Fire-Rated Rim Exit 48"		•
Hager 4500 Series Vertical Rod 36" x 84"	•	•
Hager 4500 Series Vertical Rod 36" x 96"	•	•
Hager 4500 Series Fire-Rated Vertical Rod 36" x 84"	•	•
Hager 4500 Series Fire-Rated Vertical Rod 36" x 96"	•	•
Hager 45PT Thumbpiece		•
45CE Withnell Entrance Lever Trim	•	•
45CE August Entrance Lever Trim		•
45NL Withnell Entrance Lever Trim	•	•
45BE Withnell Passage Trim		•
45DT Withnell Dummy Trim	•	•



Standard Duty Exit Devices

Standard duty hardware is recommended for low traffic areas

Standard Duty Exit Devices	Dark Bronze	Aluminum
Hager 4700 Series Rim Exit 36" Door	•	•
Hager 4700 Series Rim Exit 48" Door		•
Hager 4700 Series Fire-Rated Rim Exit 36" Door	•	•
Hager 4700 Series Fire-Rated Rim Exit 48" Door		•
Hager 4700 Series Vertical Rod 36" x 84"	•	•
Hager 4700 Series Vertical Rod 36" x 96"	•	•
Hager 4700 Series Fire-Rated Vertical Rod 36" x 84"	•	•
Hager 4700 Series Fire-Rated Vertical Rod 36" x 96"	•	•
47CE Withnell Entrance Lever Trim LHR/RHR	•	•
47CE August Entrance Lever Trim LHR/RHR		•
47NL Withnell Night Latch Lever Trim LHR/RHR	•	•
47DT Withnell Dummy Lever Trim LHR/RHR	•	•
47RN Pull	•	•
47BE Withnell Blank Trim LHR/RHR		•



Hardware & Accessories

Closers

Closers	Dark Bronze	Aluminum
5200 Series Medium Duty	•	•
5200 Series Hold Open Medium Duty	•	•
5300 Series Light to Medium Duty	•	•
5300 Series Hold Open Light to Medium Duty		•



5200 Series

Requires minimum top rail clearance of 5-3/4" from top of the door

Note: Closers stocked with Tri-mount Hardware

Hinges

	US3	US10B	US15	US26D	US32D
Bommer™ Plain Bearing 4-1/2" x 4-1/2"	•	•	•	•	
Bommer Ball Bearing 4-1/2" x 4-1/2"	•	•	•	•	•
Bommer Ball Bearing NRP 4-1/2" x 4-1/2"				•	•
Bommer Self Closing 4-1/2" x 4-1/2"				•	•



Plain Bearing Commercial



Ball Bearing Commercial

Locks

Note: Locks stocked with ASA Strike Plate



3500 Withnell
2-3/4" Backset

Withnell 3500 Series

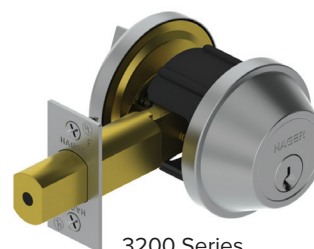
Grade 2 Cylindrical

Function	US10B	US26D
3510 Passage	•	•
3540 Privacy	•	•
3553 Entry	•	•
3570 Classroom	•	•
3580 Storeroom	•	•
3517 Dummy	•	•

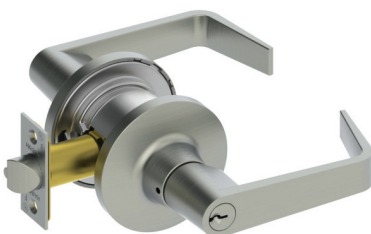
Deadbolt

Grade 2

	US10B	US26D
3215 Single Cylinder	•	•



3200 Series



3600 Withnell
2-3/8" / 2-3/4"
Adjustable Backset

Withnell 3600 Series

Grade 2 Tubular

Function	US10B	US26D
3610 Passage	•	•
3640 Privacy	•	•
3653 Entry	•	•
3680 Storeroom	•	•
3617 Dummy	•	•

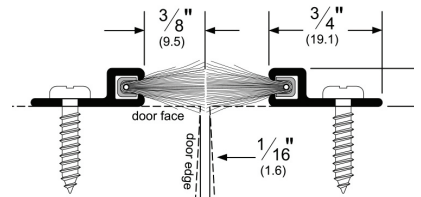
Door Accessories

	US26D	US32D		Primed
Wall Stop w/Button Lock	•		Strike Plate Filler	•
Wall Stop	•		Door Top Cap Screws	•
Floor Dome Stop	•		Frame Filler Plate Lock Edge	•
Push Plate 4" x 16"	•		3-0 Steel Capping Channel - Lockseam	•
Pull Plate 4" x 16"	•			
Latch Protector Plate		•		



Flush Mount Weatherstrip / Astragal Seal

	Dark Bronze	Aluminum
Meeting Stile Brush Weatherstrip 7' Flush Mount (For Steel and Wood Doors)	•	•
Meeting Stile Brush Weatherstrip 8' Flush Mount	•	•



802S Flush Mount Weatherstrip

ADA Thresholds

412S ADA Threshold

	Bronze	Aluminum
412S Saddle Threshold 5"	•	•
416S Saddle Threshold 7"		•
520S SVR Saddle Threshold 5"		•

Adhesive Weatherstrip

726C Adhesive Weatherstrip

	Charcoal
726C Adhesive Weatherstrip - 17' Roll	•
726C Adhesive Weatherstrip - 21' Roll	•

Brush Sweep

801S Door Sweeps

	3/0	4/0
801S Brush Sweep	•	•

Screw-on Weatherstrip

891S Screw-on Weatherstrip

	891S
Screw-on Weatherstrip 3/0 x 7/0	•
Screw-on Weatherstrip 4/0 x 7/0	•
Screw-on Weatherstrip 6/0 x 7/0	•

Door Bottom

779S Door Bottom

	3/0	4/0
779S Door Bottom	•	•

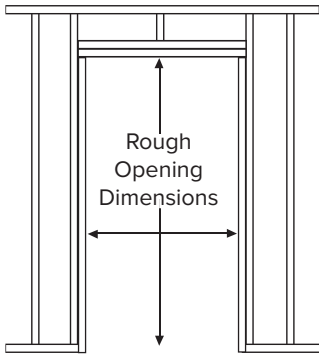
Shims

	Primed
4-1/2" Door Hinge Shim	•
4-1/2" Frame Hinge Shim	•

Always be sure to specify if accessories are required when placing an order.

Rough Openings & Handings

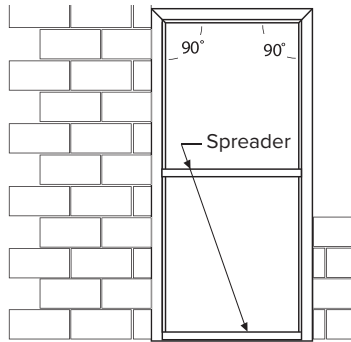
Drywall Frame R.O.



Drywall Frame

R.O = Nominal Door Width + 2"
 R.O = Nominal Door Height + 1"
 Example:
 3'0" x 6'8" R.O. = 3'2" x 6'9"

Masonry Frame R.O.

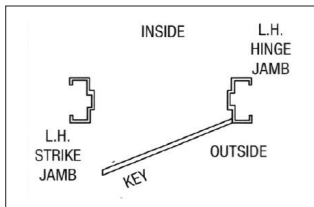


Masonry Frame

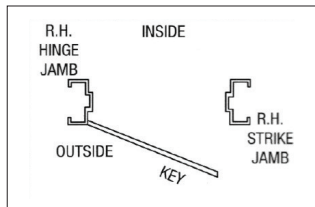
R.O = Nominal Door Width + 4-1/2"
 R.O = Nominal Door Height + 2-1/4"
 Example:
 3'0" x 6'8" R.O. = 3'4-1/2" x 6'10-1/4"

R.O. formula is the same whether it is a SGL or DBL door

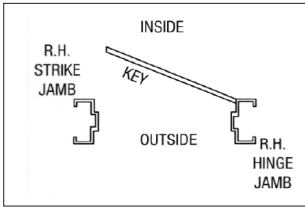
Single Doors



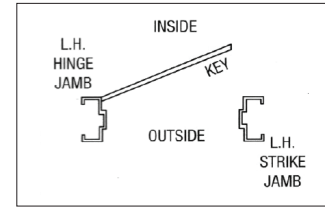
Right Hand Reverse Door
(Swing Out) Left Hand Frame



Left Hand Reverse Door
(Swing Out) Right Hand Frame



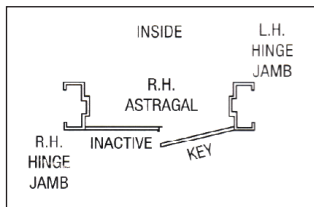
Right Hand Door
(Swing In) Right Hand Frame



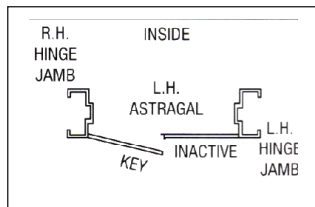
Left Hand Door
(Swing In) Left Hand Frame

Double Doors

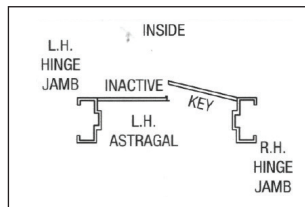
When door leaf swings towards you and hinges are on the right side of active leaf – Door is R.H.R Active / Frame is L.H. Active



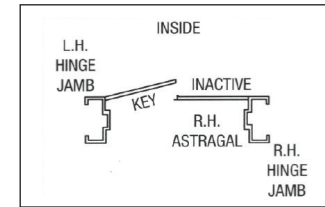
Pair of Doors - R.H.R. Active
(Swing Out)
 Double Door Frame L.H. Active



Pair of Doors - L.H.R. Active
(Swing Out)
 Double Door Frame R.H. Active



Pair of Doors - R.H. Active
(Swing In)
 Double Door Frame R.H. Active



Pair of Doors - L.H. Active
(Swing In)
 Double Door Frame L.H. Active

Commercial Doors are handed from the Secure (Key) side of the door.

More Light Commercial Options from Reeb®

In addition to the products listed here, Reeb also stocks an enormous selection of residential doors, frames, hardware and accessories suitable for light commercial applications.

Please see our residential exterior and interior door catalogs or visit reeb.com/catalogs for more information.



What is SteelCraft®?

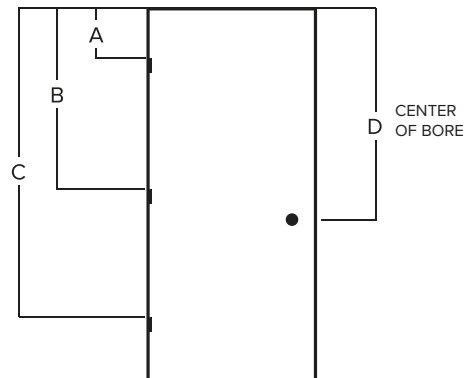
SteelCraft hinge and strike specifications are consistent with Amweld doors, a once popular product in many of Reeb's northeast territories. **Please note, our stock Pioneer hollow metal frames are manufactured to SteelCraft specifications.** If your project requires hollow metal doors or frames with Pioneer, Ceco, Curries or any other specifications, Reeb will place a special order with the manufacturer to meet your requirements.

Standard SteelCraft® Specifications

Stock Door Hinge/Bore Locations

HEIGHT	A	B	C	D
6/8	7-3/8"	37-5/16"	67-1/4"	39-9/16"
7/0	7-3/8"	39-5/16"	71-1/4"	43-9/16"

Doors are undersized 1/4" width and 3/4" height



Warranties

View product warranties, care and finishing instructions for the following companies at reeb.com/warranties/



□ Bethlehem, PA

600 Brighton St.
Bethlehem, PA 18015
(800) 862-8622 voice
(800) 772-7332 fax

□ Barclay, MD

1315 Goldsboro Rd.
Barclay, MD 21607
(800) 825-8331 voice
(800) 331-9387 fax

□ Mocksville, NC

346 Bethel Church Rd.
Mocksville, NC 27028
(800) 642-0886 voice
(800) 618-0620 fax

□ Providence, RI

19 Business Park Dr.
Smithfield, RI 02917
(800) 343-5703 voice
(800) 388-5979 fax

□ Syracuse, NY

7475 Henry Clay Blvd.
Liverpool, NY 13088
(800) 422-5224 voice
(800) 531-7332 fax



WWW.REEB.COM

PART# REEBCOM1516

VERSION 2.0